



Reckitt Road, London, W4 2BT

Guide Price £1,200,000

WHITMAN & CO.

SALES · LETTINGS · COMMERCIAL

- Located in the sought after 'Glebe Estate'
- Private 24' garden
- 23' Through Reception room
- Huge potential STPP
- Fantastic transport links
- No onward chain

Tenure - Freehold
Local Authority - Hounslow
Council Tax - F

Reckitt Road, W4

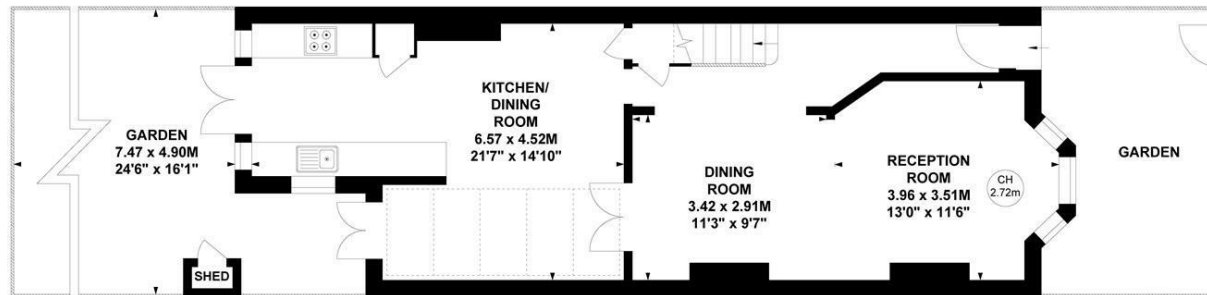
Approximate gross internal area

101.11 sq m / 1088 sq ft

Key :
CH - Ceiling Height



First Floor



Ground Floor

Not to scale, for guidance only and must not be relied upon as a statement of fact.
All measurements and areas are approximate only



THE PROPERTY

A charming well presented period cottage ideally located in the highly sought-after Glebe Estate offering an excellent balance of living and entertaining space in this central Chiswick location. Two double bedrooms, Luxury bathroom, Large loft, 23' Through reception room, 21' Hand-built Harvey Jones Kitchen/Breakfast room, Private 24' landscaped garden, Ideally situated within close proximity of Turnham Green Tube Station and the extensive range of shops, bars and restaurants.

SITUATION



5-7 Turnham Green Terrace, Chiswick, London, W4 1RG

Tel 020 8747 8800

E-mail sales@whitmanandco.com

Website www.whitmanandco.com



MISREPRESENTATION ACT 1967

Whitman & Co. for themselves and for the vendors give notice that these particulars do not constitute any part of, an offer of contract. All statements contained in these particulars are made without responsibility on the part of Whitman & Co. or the vendor. None of the statements contained in these particulars is to be relied upon as statements or representations of facts. Any intending purchaser must satisfy himself by inspection or otherwise as to the correctness of each of the statements contained in these particulars. The vendor does not make or give, and neither Whitman & Co. or any person in their employment has any authority to make or give, any representation or warranty whatever in relation to the property.